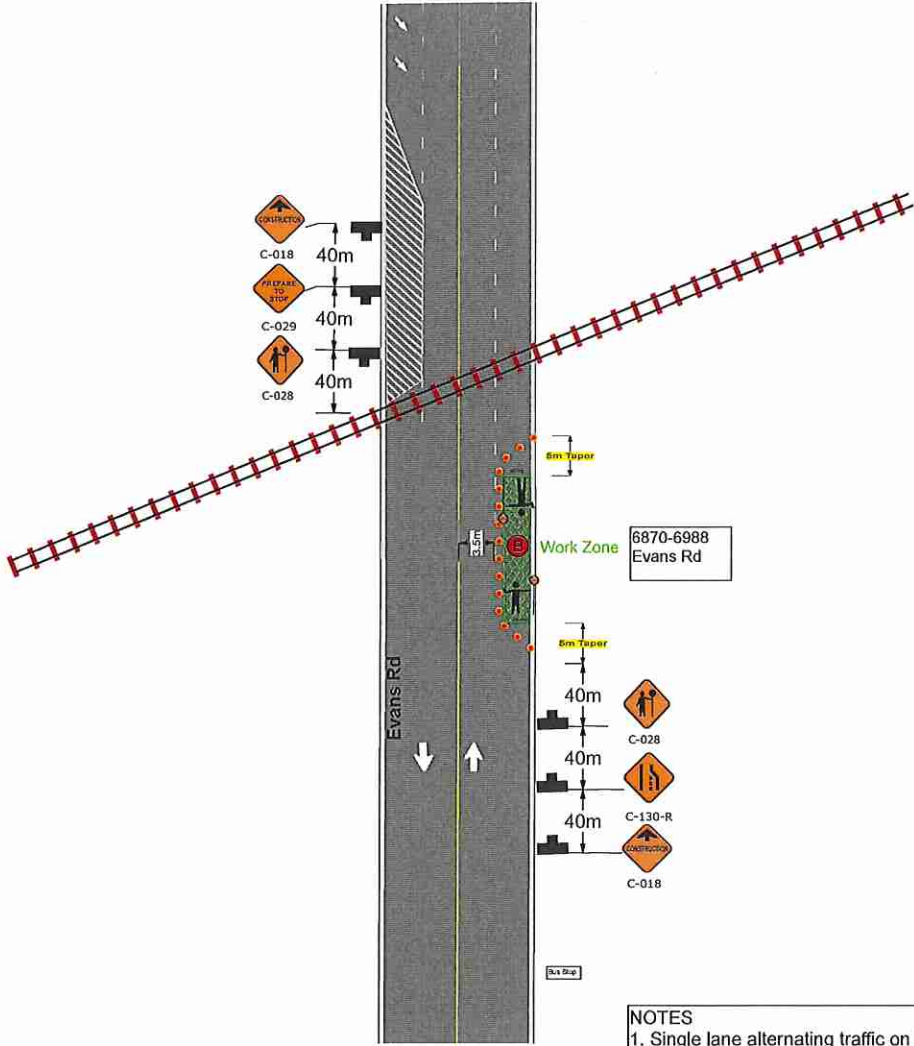
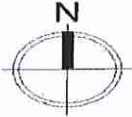


**Legend**

-  Sign Stand
-  Work Area
-  Delineator
-  Manhole
-  Train Tracks
-  Flagger

### Single Lane Alternating Traffic on Evans Rd- Manhole Testing DWG#002-B



6870-6988  
Evans Rd

Contractor: Tetra Tech  
 Site: 6476 Evans Rd, Chilliwack BC  
 Traffic Control: Canuck Flagging  
 Author: Celeste Melien  
 Contact: 604-764-5700  
 info@canuckflagging.com  
 www.canuckflagging.co

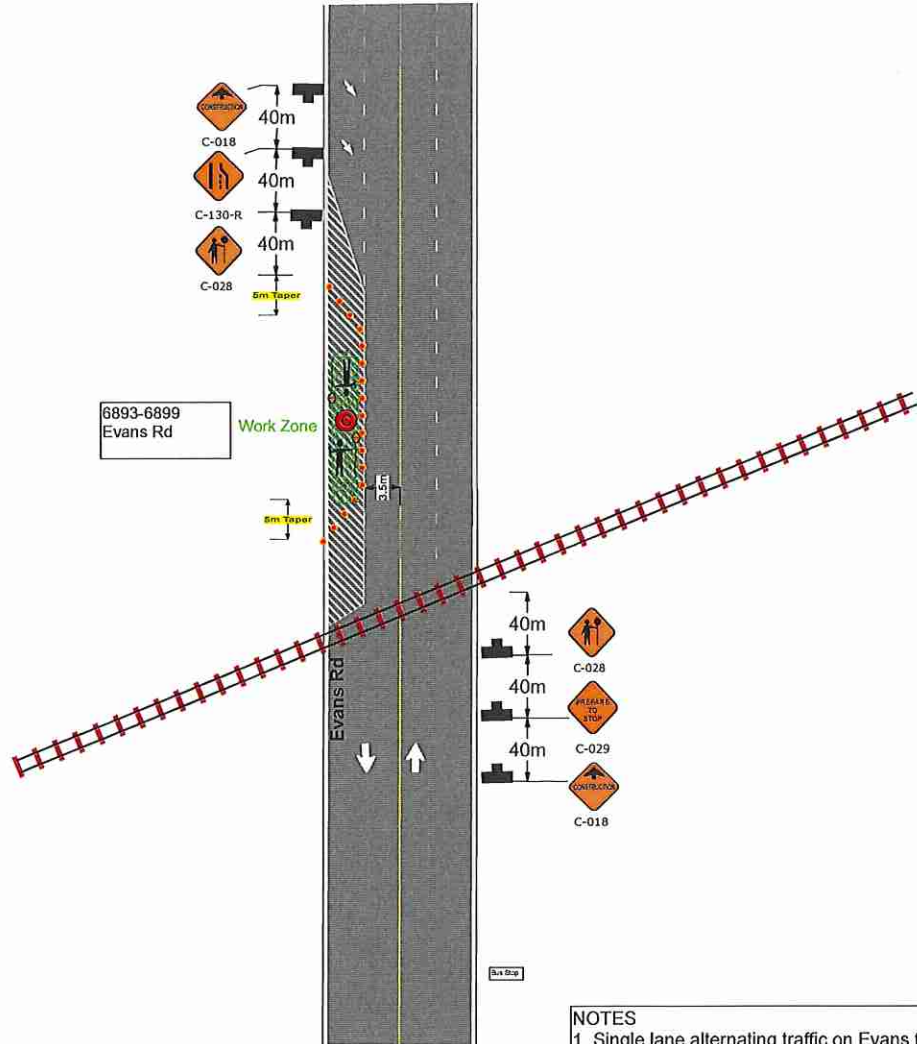
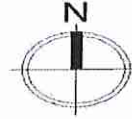


**NOTES**

1. Single lane alternating traffic on Evans for manhole testing.
2. Sidewalks maintained.
3. Bus stops & driveways will be maintained at all times and work will not interfere with transit.
4. 5m taper length. 40m sign spacing. 25- 35m transition zone, 50-75m termination area on receiving end.
5. 50km/ hr speed zone
6. Date/ Oct.23.2017 - Oct. 25. 2017 Time/ 7am-5pm Duration: 3 Days

Legend	
	Sign Stand
	Work Area
	Train Tracks
	Delineator
	Flagger
	Manhole

### Single Lane Alternating Traffic on Evans Rd- Manhole Testing DWG#003-C



6893-6899  
Evans Rd

Work Zone

5m Taper

Evans Rd

Bus Stop

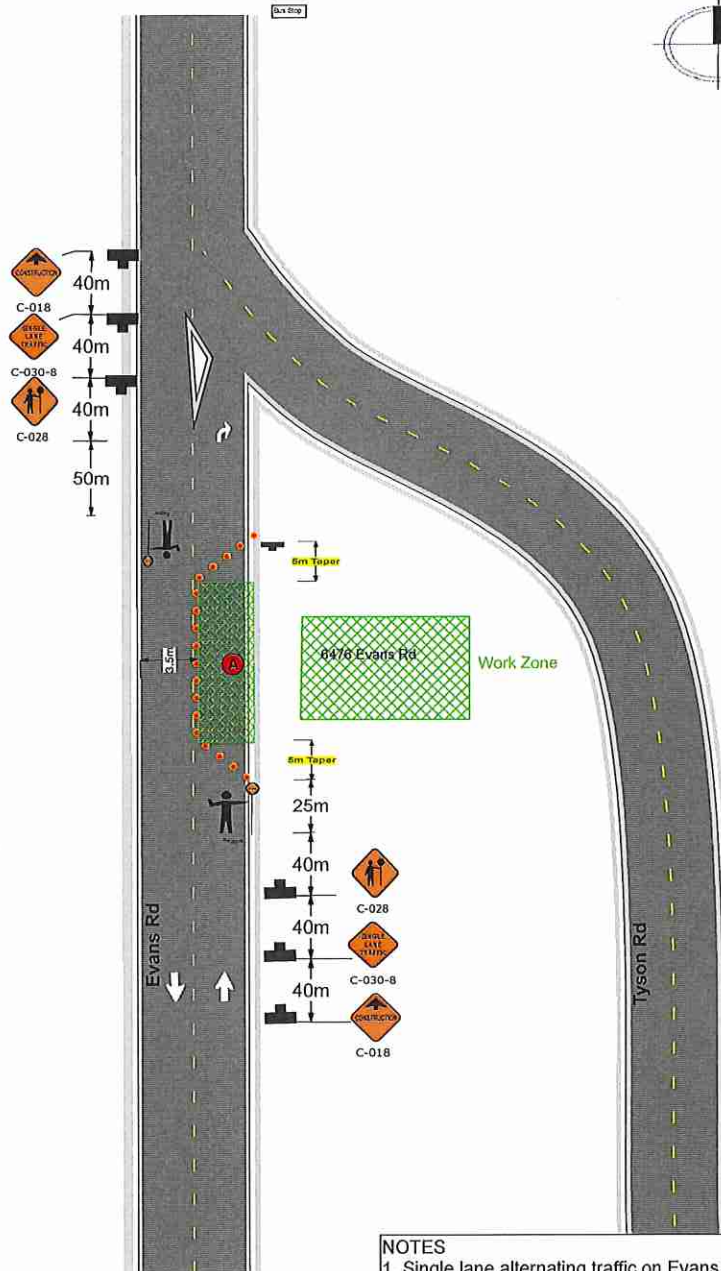
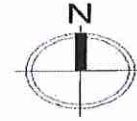
Contractor: Tetra Tech  
 Site: 6476 Evans Rd, Chilliwack BC  
 Traffic Control: Canuck Flagging  
 Author: Celeste Melien  
 Contact: 604-764-5700  
 info@canuckflagging.com  
 www.canuckflagging.co



- NOTES**
1. Single lane alternating traffic on Evans for manhole testing.
  2. Sidewalks maintained.
  3. Bus stops & driveways will be maintained at all times and work will not interfere with transit.
  4. 5m taper length, 40m sign spacing, 25- 35m transition zone, 50-75m termination area on receiving end.
  5. 50km/ hr speed zone
  6. Date/ Oct.23.2017 - Oct. 25. 2017 Time/ 7am-5pm Duration: 3 Days

Legend	
	Sign Stand
	Work Area
	Flagger
	Delineator
	Manhole

### Single Lane Alternating Traffic on Evans Rd- Manhole Testing DWG#001-A



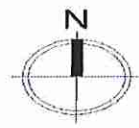
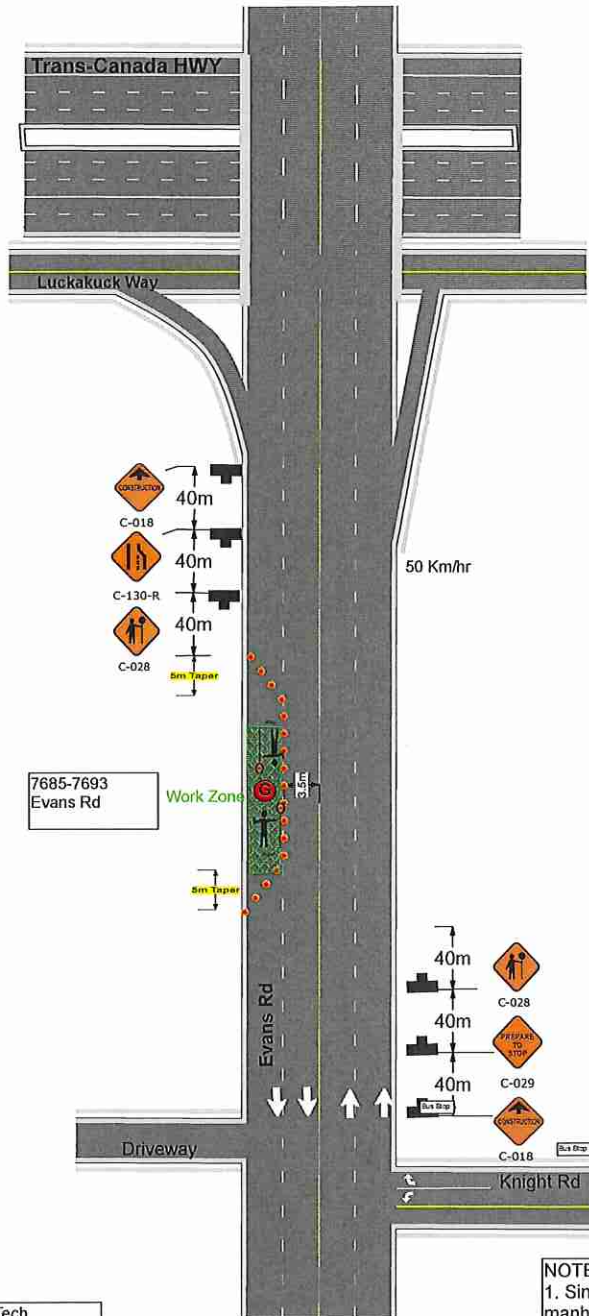
Contractor: Tetra Tech  
 Site: 6476 Evans Rd, Chilliwack BC  
 Traffic Control: Canuck Flagging  
 Author: Celeste Melien  
 Contact: 604-764-5700  
 info@canuckflagging.com  
 www.canuckflagging.co



- NOTES**
1. Single lane alternating traffic on Evans for manhole testing.
  2. Sidewalks maintained.
  3. Bus stops & driveways will be maintained at all times and work will not interfere with transit.
  4. 5m taper length. 40m sign spacing. 25- 35m transition zone, 50-75m termination area on receiving end.
  5. 50km/ hr speed zone
  6. Date/ Oct.23,2017 - Oct. 25, 2017 Time/ 7am-5pm Duration: 3 Days

Legend	
	Sign Stand
	Work Area
	Delineator
	Flagger
	Manhole

**Single Lane Alternating Traffic on Evans Rd- Manhole Testing DWG#007-G**



7685-7693  
Evans Rd

Contractor: Tetra Tech  
Site: 7685-7693 Evans Rd,  
Chilliwack BC  
Traffic Control: Canuck  
Flagging  
Author: Celeste Melien  
Contact: 604-764-5700  
info@canuckflagging.com  
www.canuckflagging.co

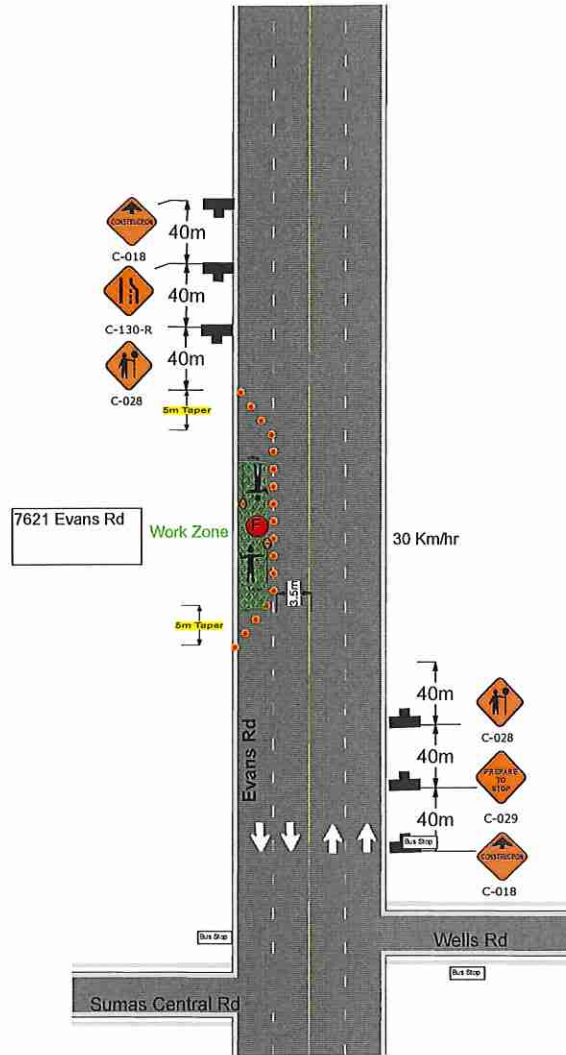
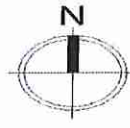


- NOTES**
1. Single lane alternating traffic on Evans for manhole testing.
  2. Sidewalks maintained.
  3. Bus stops & driveways will be maintained at all times and work will not interfere with transit.
  4. 5m taper length, 40m sign spacing, 25- 35m transition zone, 50-75m termination area on receiving end.
  5. 50km/ hr speed zone
  6. Date/ Oct.23,2017 - Oct. 25, 2017 Time/ 7am-5pm Duration: 3 Days



Legend	
	Sign Stand
	Work Area
	Delineator
	Flagger
	Manhole

### Single Lane Alternating Traffic on Evans Rd- Manhole Testing DWG#006-F



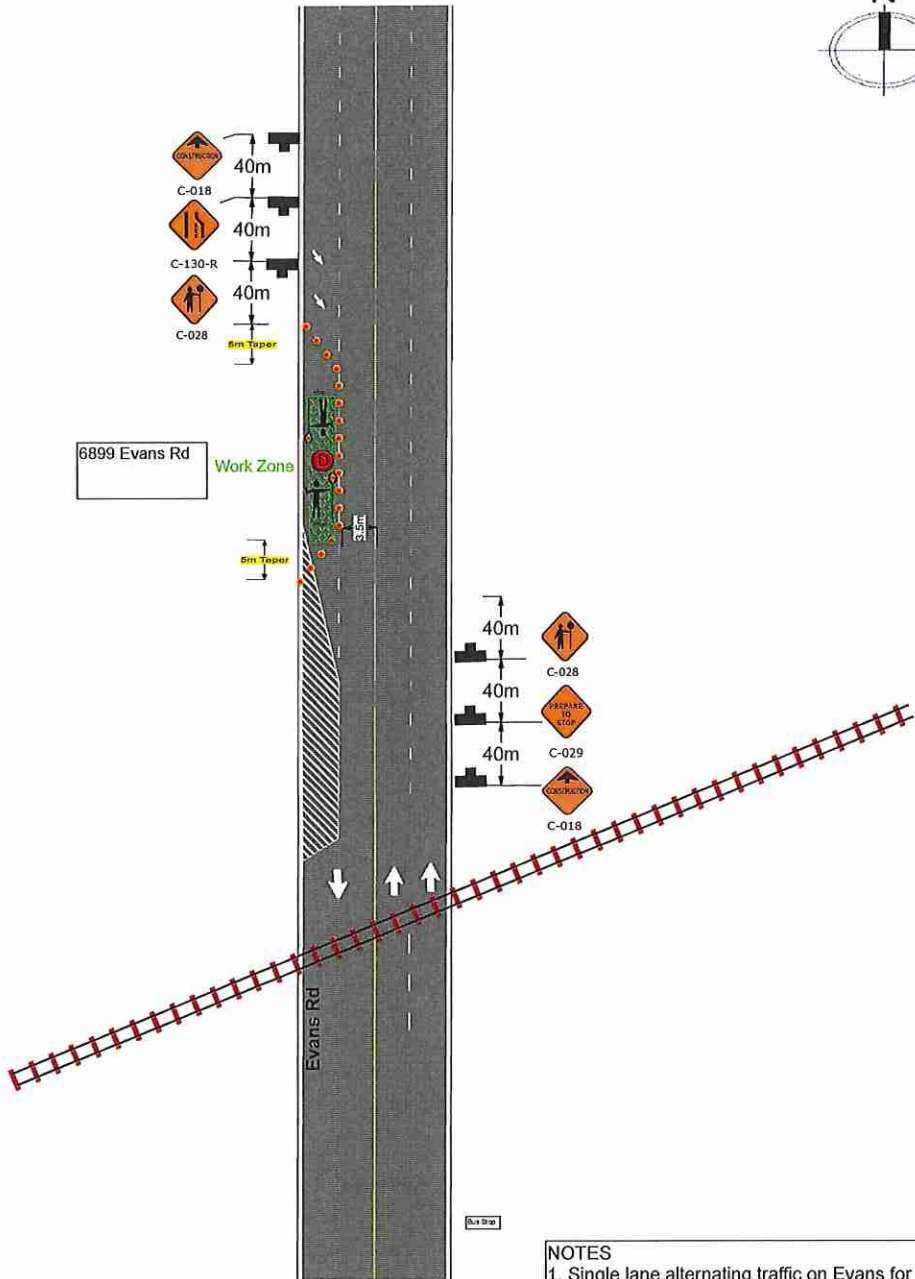
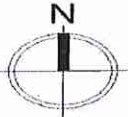
Contractor: Tetra Tech  
 Site: 7621 Evans Rd, Chilliwack BC  
 Traffic Control: Canuck Flagging  
 Author: Celeste Melien  
 Contact: 604-764-5700  
 info@canuckflagging.com  
 www.canuckflagging.co



- NOTES**
1. Single lane alternating traffic on Evans for manhole testing.
  2. Sidewalks maintained.
  3. Bus stops & driveways will be maintained at all times and work will not interfere with transit.
  4. 5m taper length. 40m sign spacing. 25- 35m transition zone, 50-75m termination area on receiving end.
  5. 30km/ hr speed zone
  6. Date/ Oct.23.2017 - Oct. 25. 2017 Time/ 7am-5pm Duration: 3 Days

Legend	
	Sign Stand
	Work Area
	Train Tracks
	Delineator
	Flagger
	Manhole

### Single Lane Alternating Traffic on Evans Rd- Manhole Testing DWG#004-D



6899 Evans Rd

Work Zone

5m Taper

Evans Rd

Bus Stop

Contractor: Tetra Tech  
 Site: 6476 Evans Rd, Chilliwack BC  
 Traffic Control: Canuck Flagging  
 Author: Celeste Melien  
 Contact: 604-764-5700  
 info@canuckflagging.com  
 www.canuckflagging.co

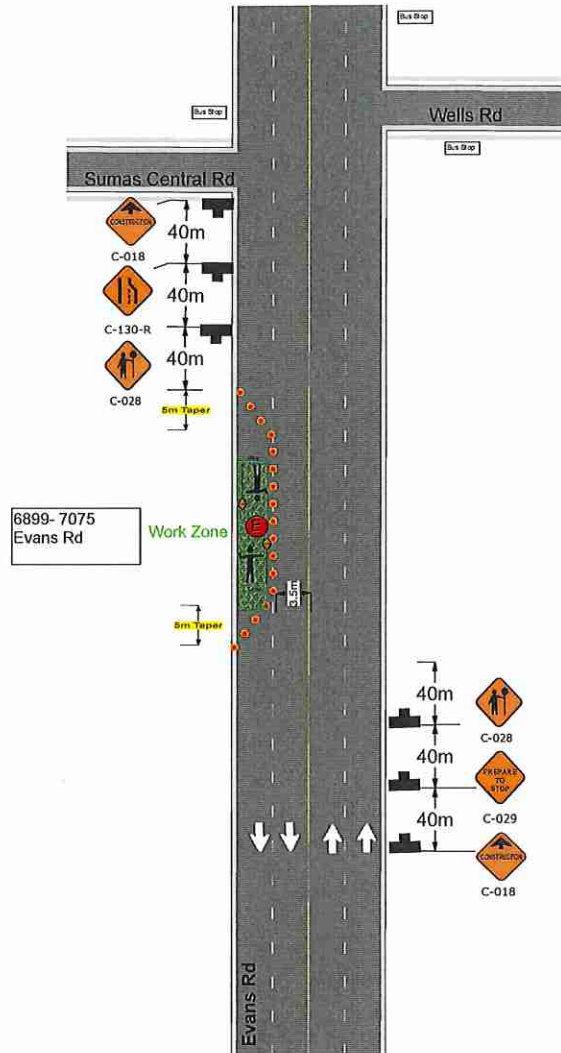
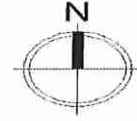


**NOTES**

1. Single lane alternating traffic on Evans for manhole testing.
2. Sidewalks maintained.
3. Bus stops & driveways will be maintained at all times and work will not interfere with transit.
4. 5m taper length. 40m sign spacing. 25- 35m transition zone, 50-75m termination area on receiving end.
5. 50km/ hr speed zone
6. Date/ Oct.23.2017 - Oct. 25. 2017 Time/ 7am-5pm Duration: 3 Days

Legend	
	Sign Stand
	Work Area
	Delineator
	Flagger
	Manhole

### Single Lane Alternating Traffic on Evans Rd- Manhole Testing DWG#005-E



Contractor: Tetra Tech  
 Site: 6476 Evans Rd, Chilliwack BC  
 Traffic Control: Canuck Flagging  
 Author: Celeste Melien  
 Contact: 604-764-5700  
 info@canuckflagging.com  
 www.canuckflagging.co



- NOTES**
1. Single lane alternating traffic on Evans for manhole testing.
  2. Sidewalks maintained.
  3. Bus stops & driveways will be maintained at all times and work will not interfere with transit.
  4. 5m taper length. 40m sign spacing. 25- 35m transition zone, 50-75m termination area on receiving end.
  5. 50km/ hr speed zone
  6. Date/ Oct.23,2017 - Oct. 25, 2017 Time/ 7am-5pm Duration: 3 Days

